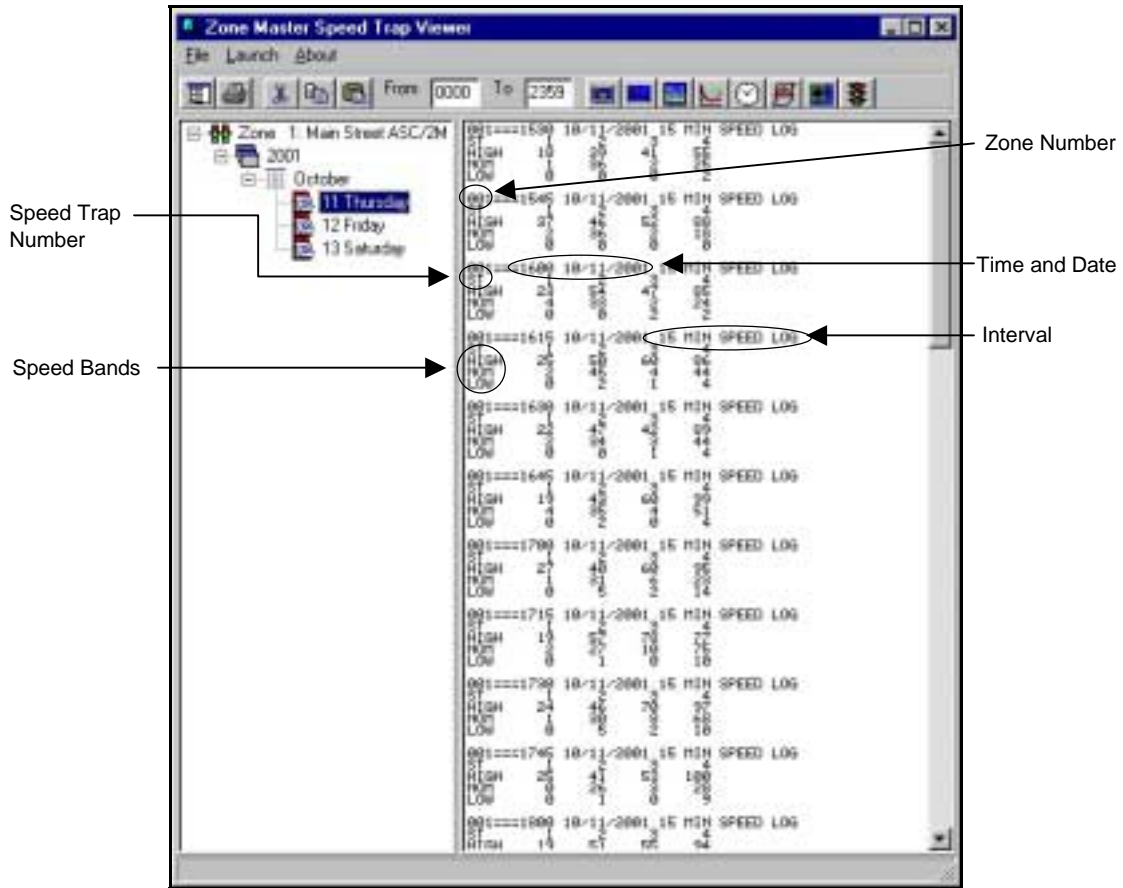


# Chapter 1

# Zone Master Speed Trap View

Zone Master Speed Trap Viewer is a new addition to the Aries system. Similar in window layout and tree function of the Log File Manager, Speed Trap allows you to view speed detector log files in the progress window on the right side of the screen.



*Zone Master Speed Trap Viewer.*

## Commands

Speed Trap Viewer menu bar's File menu option has three selections, Change Log Directory, Print and Exit.

Change Log Directory allows you to change the log directory from the default directory 'Zmlogs' to another directory. Print allows you to print the information in the window in the right hand side of the screen. Exit allows you to leave Speed Trap viewer.

## Zone Master Speed Trap View

---

### Speed Trap Display

Speed Trap displays the five line information logs in 15, 30 or 60 minute increments called intervals. The first line begins with the zone number, followed by the time and date of the entry and the time interval of the log itself. The second line shows the speed trap numbers for that zone. Each zone shows up to eight speed traps.

The third, fourth and fifth lines show the speed band amounts, or the number of cars traveling between certain speeds during that 15 minute interval. A low speed band is considered to be the number of cars traveling between 0 and 25 miles per hour (MPH). Nominal (NOM) speed is between 25 and 35 MPH. High speed indicates cars traveling at 35 miles or more per hour.

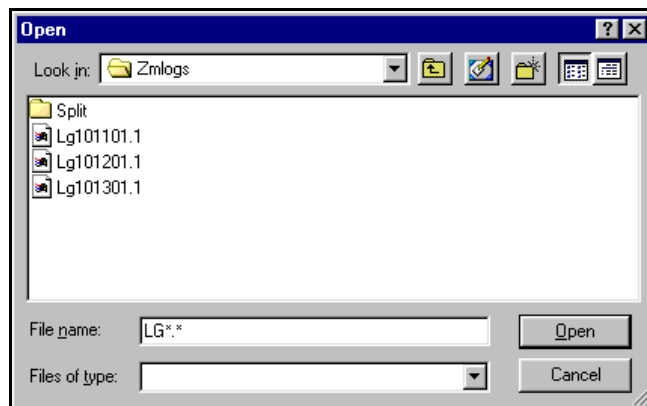
### Intervals

Interval refers to the time increment of each log. Intervals can be set to 15, 30 or 60 minute increments. A zero selection XXX. Interval times, are set in the Master Data Entry screens.

In the Master Data Entry screen, select Logging Parameters from the Item List. In the General Tab, 'Default SD and SPD Log Period' pertains to setting the interval during which speed trap logs are taken. For example, when you select 30 from the 'Default SD and SPD Log Period' drop down box, the speed trap logs display the zone, time and date, interval amount, trap number and show the amount of cars counted in high, nominal and low ranges.

### Acquiring and Displaying Information

When Aries Zone Manager uploads data entry information from a zone or intersection controller or an intersection monitor, those files are copied to the hard drive and used as master files. Those master files contain log files that are stored in the 'Zmlogs' directory.



*Zmlogs directory*

## Zone Master Speed Trap View

---

'Zmlogs' directory lists detector logs and event files with a slightly unusual naming convention. Files beginning with 'Ev' are event files. Files beginning with 'Lg' are detector logs. The numbers following these designations indicate the dates of the files in the MMDDYY

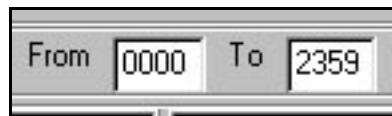
format. The number after the period indicates the zone the information pertains to.

For example, an event log from zone 7 dated October 23, 2001 appears as 'Ev102301.3.' 'Lg101799.3' indicates a detector log file from October 17, 1999 pertaining to zone 3.

These files display all speed events for a 24 hour period.

### Time Indicators

In Speed Trap Viewer's icon menu, there are two field boxes labeled 'From' and 'To.' These field boxes provide a means of filtering the log information to show all the records that were recorded between certain times.



*Time Indicators*

To view logs for specific times, enter in a 'From' or beginning time (times must be entered in military format) and a 'To' or ending time. In the example shown below, logs are shown for the times between 5:00 p.m. and 7:00 p.m. 5:00 p.m. is listed as 1700 military time and 7:00 p.m. is entered as 1900. The logs shown in the Progress window are were taken between 5:00 p.m. and 7:00 p.m.

## Zone Master Speed Trap View

ST	HIGH	NOM	LOW
1	27	1	0
4	46	31	5
6	60	20	2
9	85	14	0
15	100	14	0
1	19	0	0
5	25	2	0
7	30	10	0
10	35	7	0
15	40	10	0
1	24	0	0
4	44	6	0
7	70	9	0
10	94	7	0
15	110	10	0
1	25	0	0
4	41	2	0
5	50	5	0
10	60	10	0
15	70	10	0
1	19	0	0
5	25	0	0
7	30	4	0
10	35	2	0
15	40	0	0
1	24	0	0
4	44	3	0
7	70	4	0
10	94	7	0
15	110	10	0
1	19	0	0
4	40	2	0
7	50	1	0
10	60	6	0
15	70	10	0
1	21	0	0
4	40	3	0
7	50	2	0
10	60	4	0
15	70	1	0

*Speed Trap Viewer showing time specific logs.*

### Copying, Pasting and Printing Information

Records displayed in the Speed Trap Viewer's progress window can be cut or copied and pasted into any word processing application as a .txt file.

Select the records you want to copy and click on the cut or copy icon. Open the word processing application and the file to receive the records. Put the cursor where the records are to appear and select the paste icon. The records show in the new document.