

GETTING STARTED

Introduction

Section I introduces the ATC/2070 software and this manual.

Section II contains a brief technical description of the ATC 2070 controller series.

Section III contains a detailed description of the 2070 front panel keypad and display as used by the ATC/2070 software.

Section IV contains programming instructions and parameter definitions. Each of the data entry submenus is presented in the same way: The submenu appears as it does on the screen followed by programming information for each submenu data screen in sequence. A table of definitions for each data screen is given.

Appendix A is a programming reference. It is a listing of all data screens that can be viewed on the ATC/2070 series LCD displays. The data values shown on the data screens in this listing are the default values and settings.

Appendix B contains pin lists for I/O connectors.

Appendix C contains a keypad entry tree.

Appendix D contains a list of error messages and status conditions.

Appendix E contains pretimed controller operation information.

GETTING STARTED

Requirements

System Requirements

The ATC/2070 recommends Procomm Plus® (version 4.0 or higher), a third-party communications application that turns a PC or laptop into a terminal. Procomm Plus® provides a scripting language that automates the installation of software files and provides transfer protocols. Software installation and system maintenance are conducted through a serial port on the computer and the front panel port "C50S" on the ATC/2070 controller.

Please be advised that the ATC/2070 installation software works only on ATC/2070 controller compatible systems.

Procomm Plus® 4.0 Requirements:

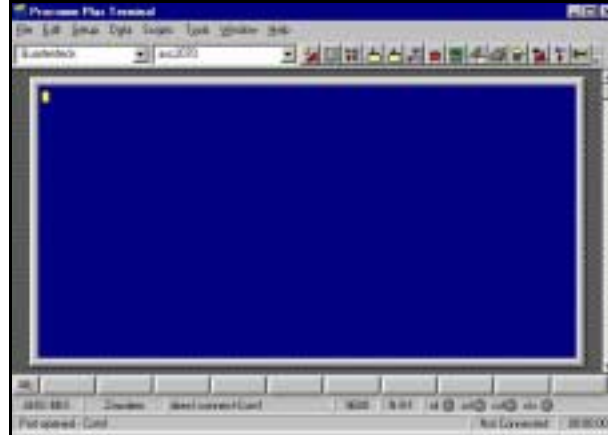
- A 486SX or Pentium class computer.
- 166 MHz or higher.
- Windows® Operating System:
 - Windows® 95 (needs 8 MB RAM minimum, 16 MB recommended).
 - Windows® 98/NT 4.0 (16 MB RAM minimum, 32 MB RAM recommended), or:
 - Windows® 2000 (32 MB RAM minimum, 64 MB RAM recommended).
- 60 MB free hard disk space.
- A CD ROM Drive.
- 256-color VGA video.

Hardware Requirements:

- A laptop computer.
- A serial download cable (either part # 35119G20, 21 or 22, depending on the length needed).

Installation

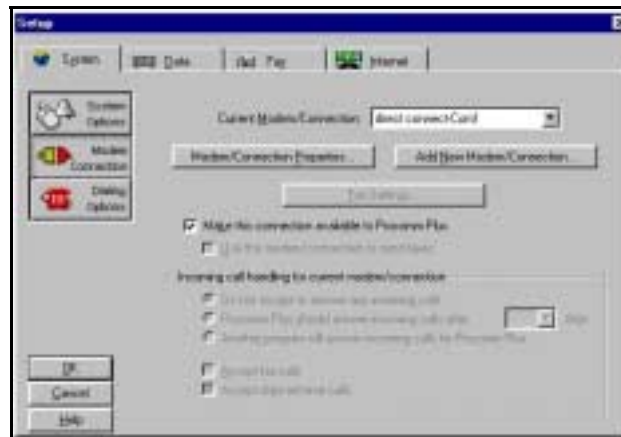
The installation procedures cover the installation of the ATC/2070 from a laptop computer to the controller unit. The laptop must have Procomm® pre-installed prior to ATC/2070 installation procedures. To install Procomm® on the computer, please refer to Procomm's installation manual for further information on system requirements and procedures.



Procomm Plus window

To adjust Procomm's settings:

1. Be sure the controller unit power is turned off. Attach connector cable from the computer serial port, to the (C50S) serial port on the console, then turn on the controller power.
2. Insert ATC/2070 CD into CD-ROM.
3. Run the Procomm program.

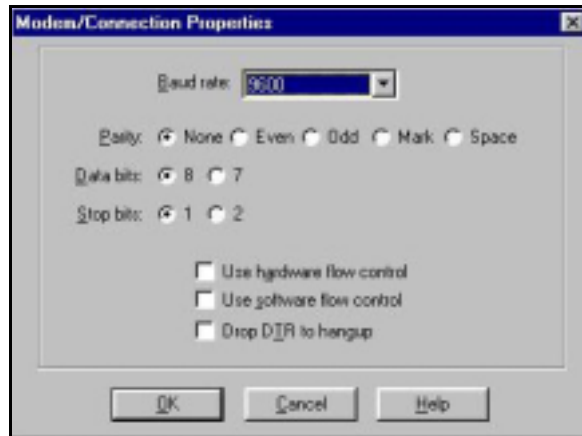


Procomm setup window

4. At the Setup window:
 - a. The Current Modem Connection drop down box defaults to "select direct connect-Com1." If this is the case, select it from the drop down box now.
 - b. Click on the Modem/Connections Properties screen.

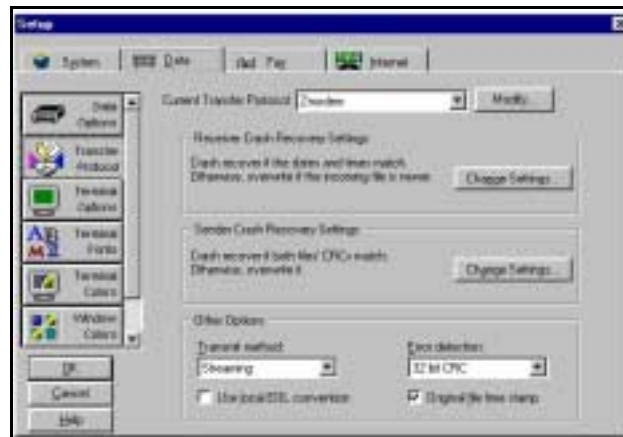
GETTING STARTED

Installation



Modem/Connection Properties window

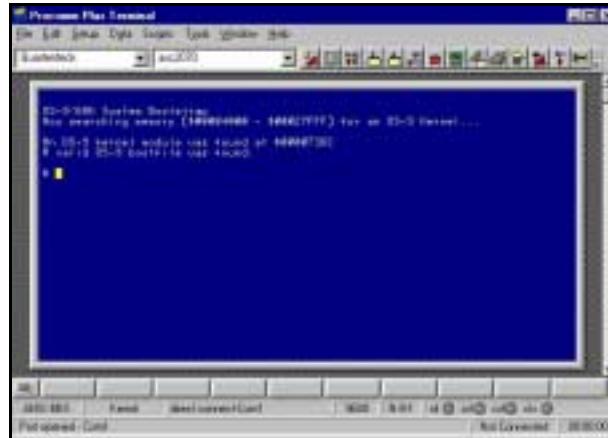
5. In the Modem/Connection Properties window, the following options default to those shown below. If this is not the case, set the options as follows:
 - Baud rate needs to be 9600, if not, please select 9600 from pull down menu.
 - Set Parity to 'None' if not already done as the default.
 - Set Data bits to '8' if not already done as the default.
 - Set Stop bits to '1' if not already done as the default.
 - Deselected 'Use hardware flow control' if not already done as the default.
 - Deselected 'Use soft flow control' if not already done as the default.
 - Deselected 'Drop DTR to hangup' if not already done as the default.
- c. Click OK to exit the Modem/Connection Properties screen.
- d. The option "Make this connection available to Procomm Plus®" is the default selection. If it is not already selected, select it now.



Setup window with Data tab selected.

- f. Select the Data tab.
- g. At the 'Current Transfer Protocol' drop-down box, select Kermit.
- h. Click OK to exit.

To install the ATC/2070 software program:



Procomm screen showing ATC/2070 installation.

1. Hold down the Backspace key throughout this procedure.
2. Open console door, power off the unit, wait 5 seconds and power on the unit.
3. Continue to hold down the backspace key until the "\$" prompt appears. At the install screen, you need to see the "\$" prompt.
4. 'asc2070' should appear in the script file drop-down box.
 - If this is not the case, do the following steps:
 - Select 'asc2070' from the second drop down script file list.
 - Go to the Scripts Menu and select Run.
 - Select 'asc2070.wax' and click Open.
5. Go back to the Scripts menu and select Start Scripts. At the message asking, "Do you wish to delete all previous files and directories?," press the "Y" key for yes.

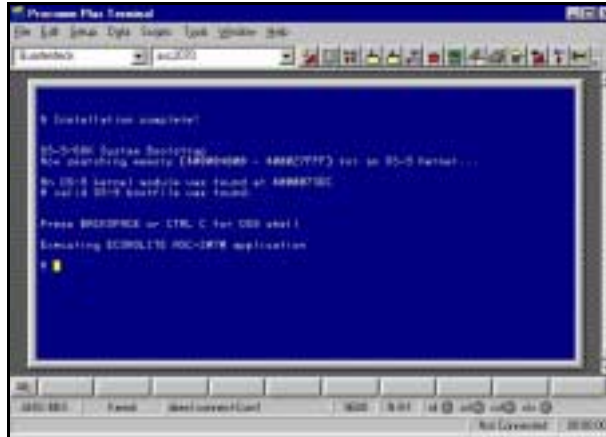
Warning:

Switching to another program while Procomm is running the installation of ATC/2070 causes the system focus to shift. Returning to the Procomm window will not automatically return system focus to Procomm. To return system focus to Procomm, you must click the cursor in the middle of the blue screen.

6. Installation of the ATC/2070 software begins. The program files go through several stages of file transfer and decompression, moving files from one operating system (DOS based) to another (OS-9).
7. After installation is complete, power down the unit, then power the unit back up. The screen appears as follows:

GETTING STARTED

Installation



Procomm window after installation is complete.

Once the installation is complete:

1. Exit Procomm.
2. Disconnect the connector cable.
3. Turn on the controller's power.
4. Verify that the system initializes properly by turning on the ATC/2070 unit. The controller LED screen appears and flashes between two sets of software information. The screen displays information similar to the following:

ECONOLITE CONTROL PRODUCTS, INC.					
ASC 2070 (C)2000					
SOLVING TOMORROW'S TRAFFIC					
PROBLEMS. . . TODAY					
BOOT	35221	1.00A00	OS9	35220	3.20
DMOD	34526	N1000B	SYS	35235	1.00B02
OPEX	35222	1.00B04	FI0	35226	1.00B03
TRAF	35223	1.00B02	CON	35225	1.00B06
UI	35224	1.00B08	WD		
PROT	35227	1.00B02	APPL	35234	1.00B02
AB_L	35229	1.00B02	AB_P	35230	1.00B02

ATC/2070 Sign On Screen

5. Begin programming the unit via the keypad on the unit's console.